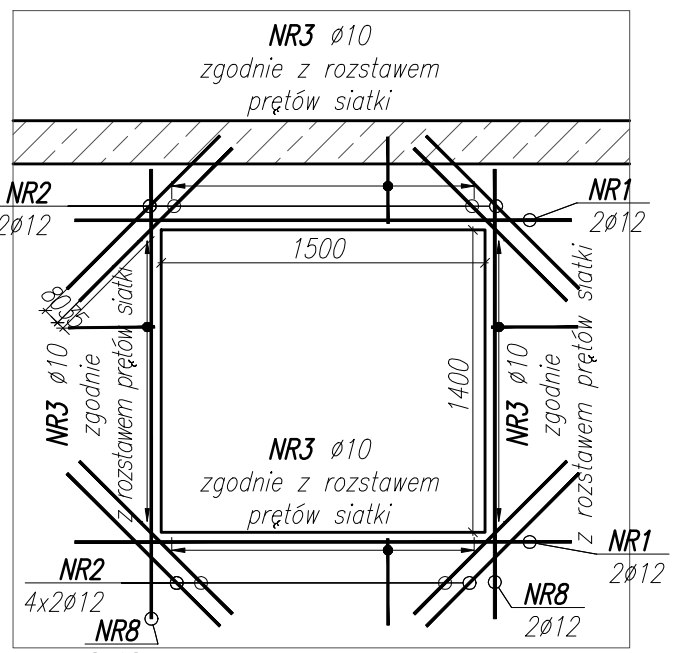
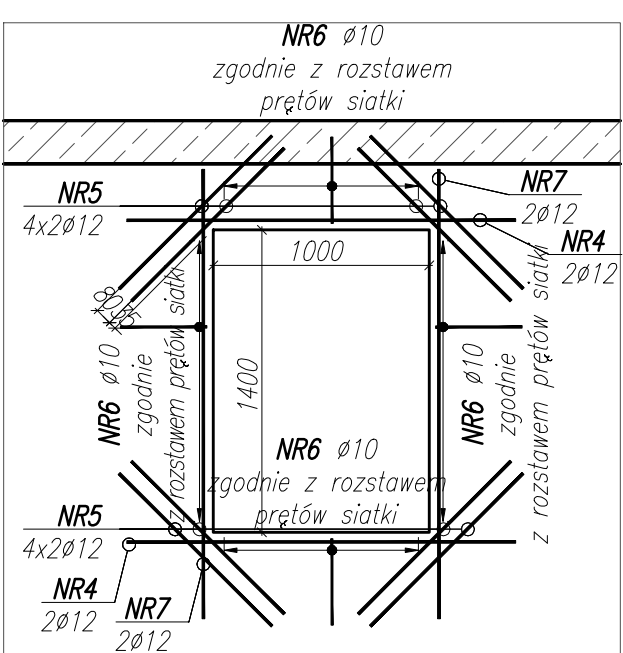


SKALA 1:30
DETAL "A"



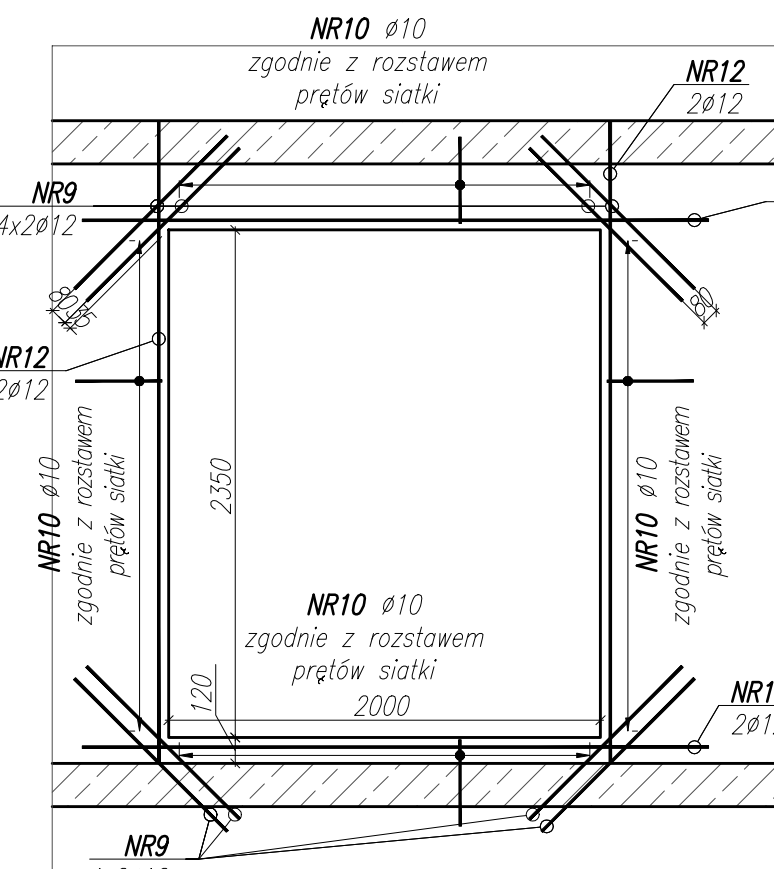
NR 1 4 xø 12A-IIIIN l= 2300
NR 2 16 xø 12A-IIIIN l= 1000
NR 3 38 xø 10A-IIIIN l= 890

SKALA 1:30
DETAL "B"



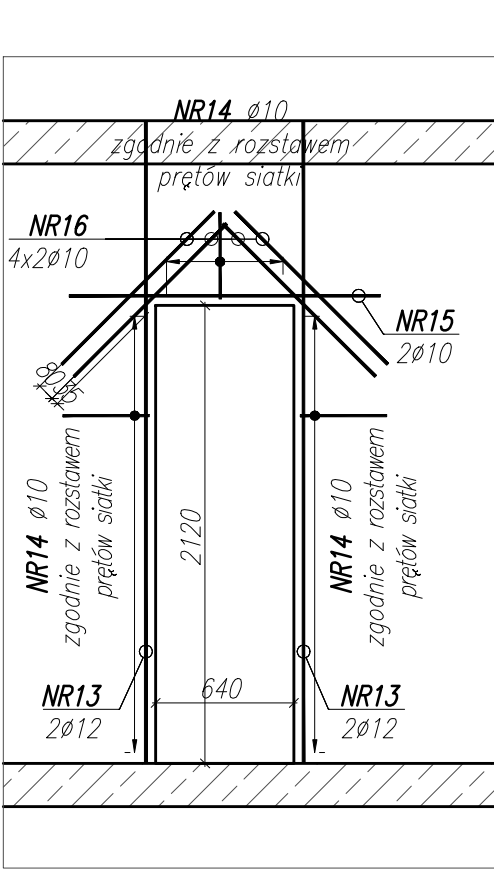
NR 4 4 xø 12A-IIIIN l= 1800
NR 5 16 xø 12A-IIIIN l= 1000
NR 6 34 xø 10A-IIIIN l= 890

SKALA 1:30
DETAL "C"



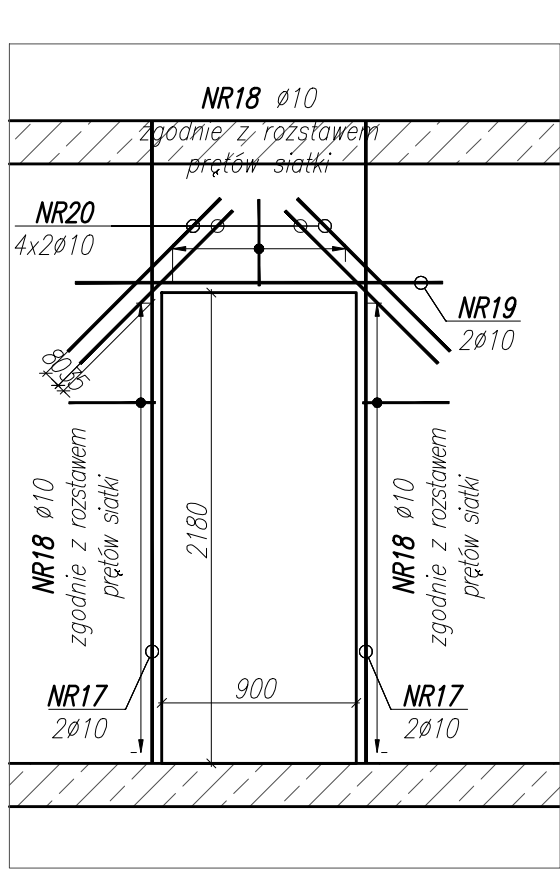
NR 11 4 xø 12A-IIIIN l= 2900
NR 9 16 xø 12A-IIIIN l= 1000
NR 10 60 xø 10A-IIIIN l= 890

SKALA 1:30
DETAL "D"



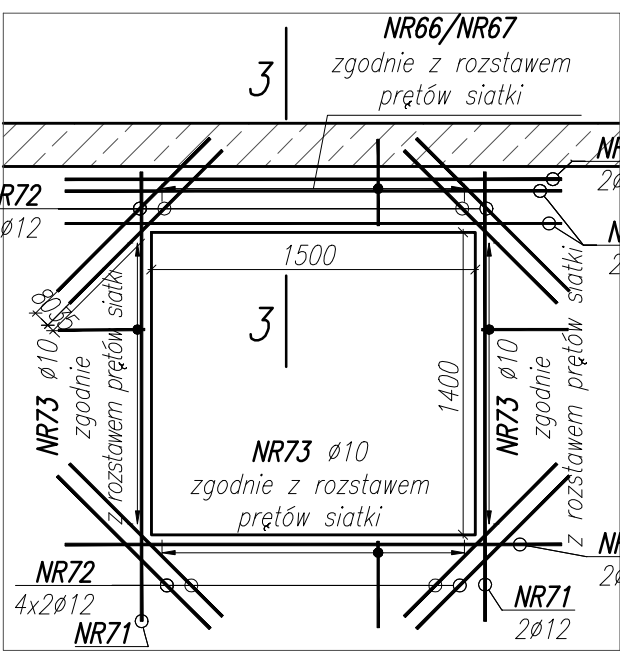
NR 15 2 xø 12A-IIIIN l= 1440
NR 16 8 xø 10A-IIIIN l= 1000
NR 14 34 xø 10A-IIIIN l= 920

SKALA 1:30
DETAL "E"



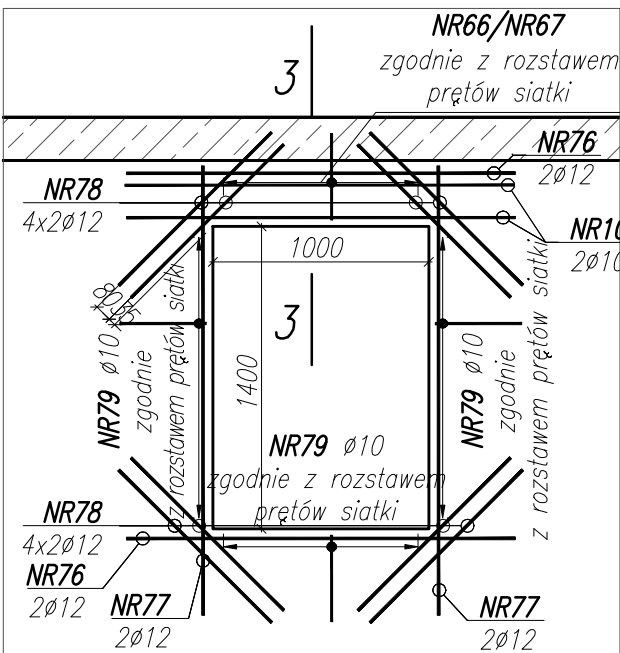
NR 19 2 xø 12A-IIIIN l= 1700
NR 20 8 xø 10A-IIIIN l= 1000
NR 18 36 xø 10A-IIIIN l= 920

SKALA 1:30
DETAL "A*"



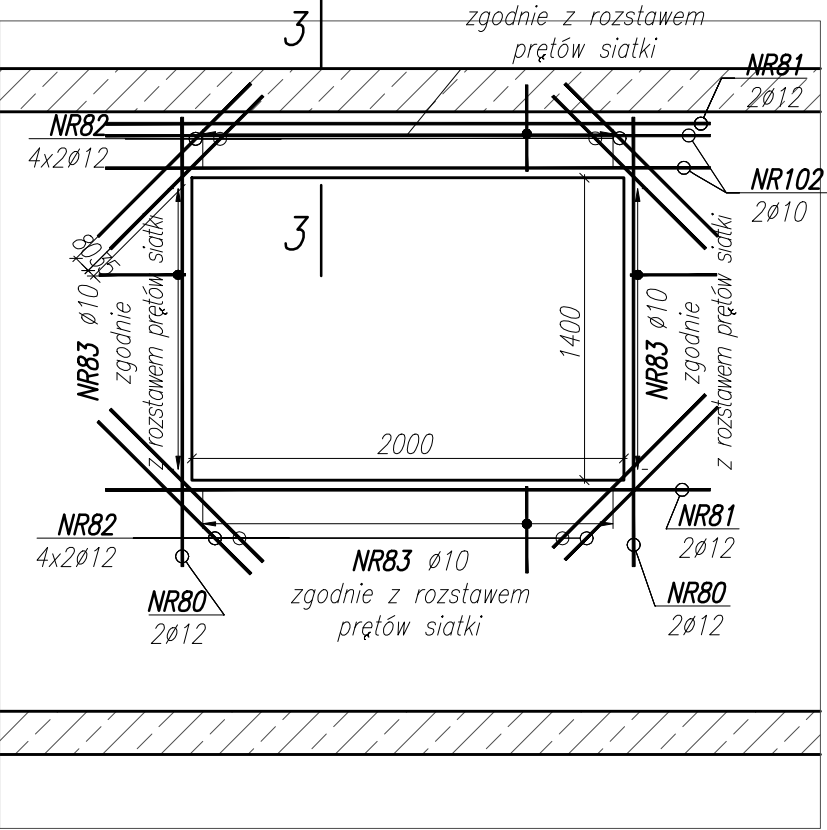
NR 100 5 xø 10A-IIIIN l= 2300
NR 70 4 xø 12A-IIIIN l= 2300
NR 72 16 xø 12A-IIIIN l= 1000
NR 73 28 xø 10A-IIIIN l= 890

SKALA 1:30
DETAL "B*"



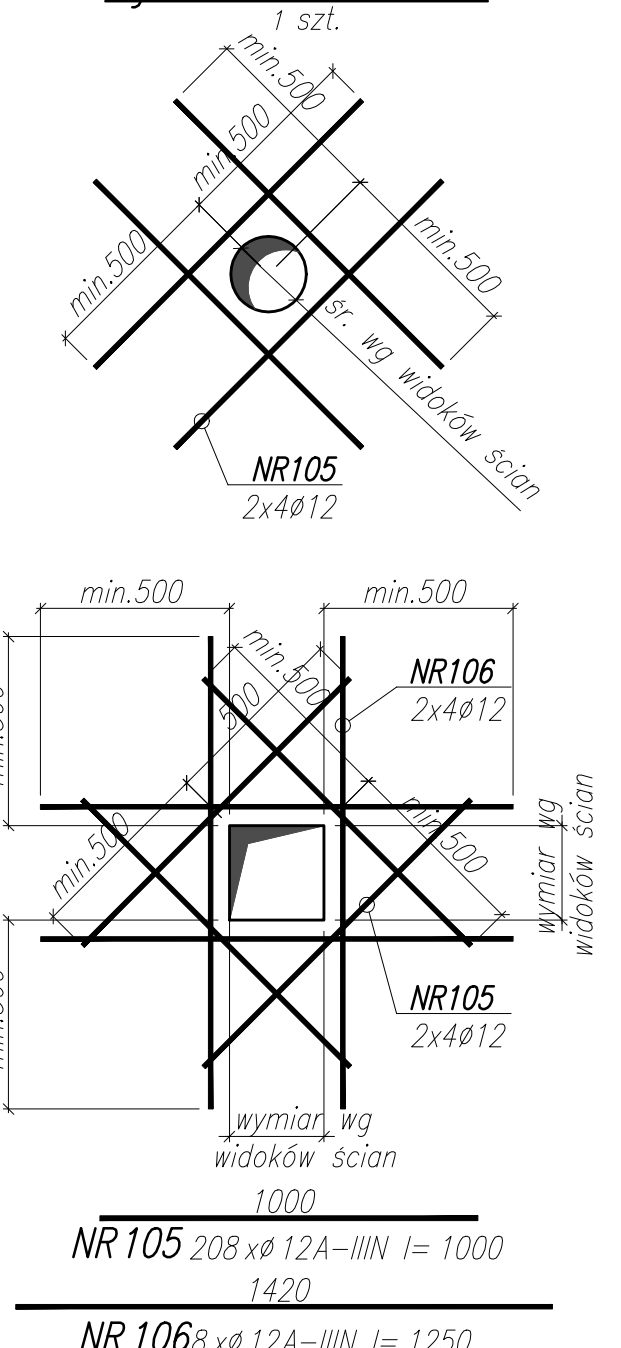
NR 101 5 xø 10A-IIIIN l= 1800
NR 76 4 xø 12A-IIIIN l= 1800
NR 78 16 xø 12A-IIIIN l= 1000
NR 79 27 xø 10A-IIIIN l= 890

SKALA 1:30
DETAL "G*"



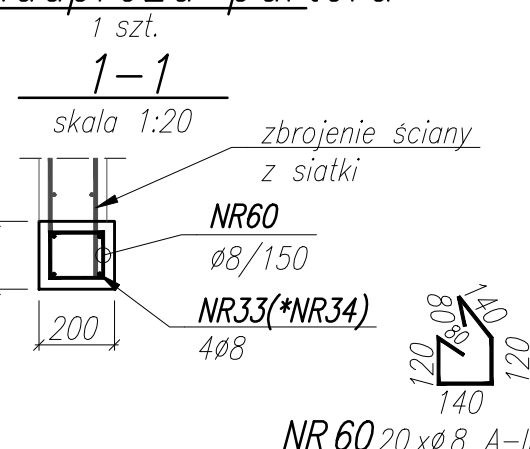
NR 102 5 xø 10A-IIIIN l= 2800
NR 81 4 xø 12A-IIIIN l= 2800
NR 82 16 xø 12A-IIIIN l= 1000
NR 83 34 xø 10A-IIIIN l= 890

Detal dozbrojenia otworów w ścianach

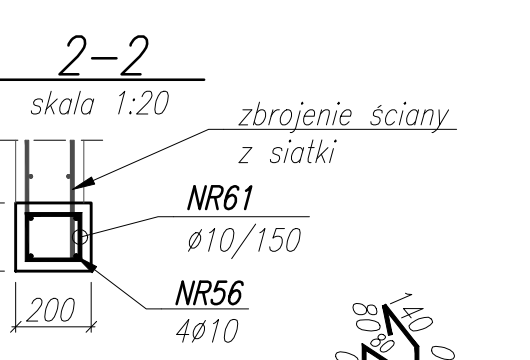


NR 105 208 xø 12A-IIIIN l= 1000
NR 106 8 xø 12A-IIIIN l= 1250

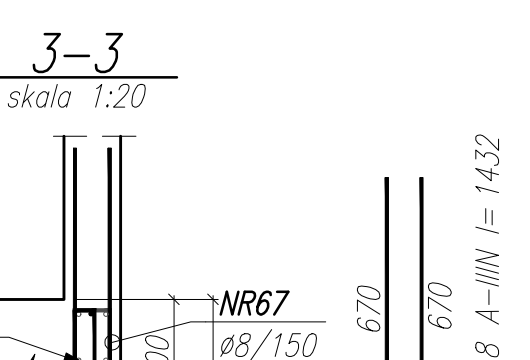
Detal nadproża parteru



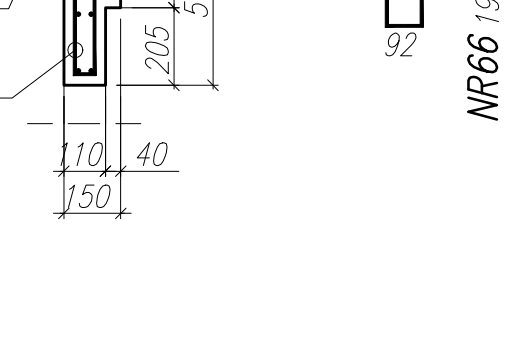
NR 60 20 xø 8 A-IIIIN l= 680



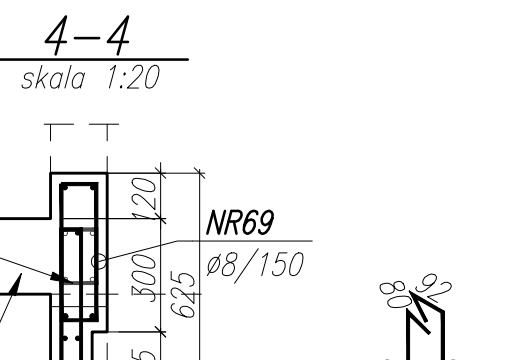
NR 61 20 xø 10A-IIIIN l= 680



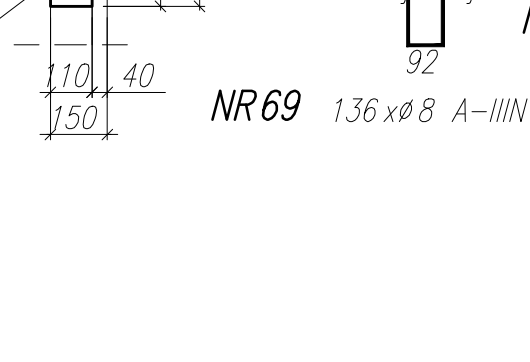
NR 67 19 xø 8 A-IIIIN l= 1158



NR 67 19 xø 8 A-IIIIN l= 1158



NR 67 19 xø 8 A-IIIIN l= 1158



NR 69 136 xø 8 A-IIIIN l= 1004

03

NAZWA ELEMENTU	NR PRETA	# PRETA mm	DŁUGOŚĆ PRETA mm	KŁOSZ			DŁUGOŚĆ RAZEM			
				PRETOW ELEM. szt.	ELEM. szt.	RAZEM PRETOW szt.	#12 A-IIIIN m	#8 A-IIIIN m	#10 A-IIIIN m	
Detal dozbrojenia otworów w ścianach - 1 szt.										
	105	12	1000	208	1	208		208		
	106	12	1250	8	1	8		10		
Detal nadproża parteru - 1 szt.										
	66	8	1432	191	1	191			273,5	
	67	8	1158	191	1	191			221,2	
	68	8	1158	136	1	136			157,5	
	69	8	1004	136	1	136			136,5	
DETAL "D*" - 1 szt.										
	80	12	2080	4	1	4		8,3		
	81	12	2800	4	1	4		11,2		
	82	12	1000	16	1	16		16		
	83	10	890	34	1	34				30,3
	102	10	2800	5	1	5				14
DETAL "B*" - 10 szt.										
	76	12	1800	4	10	40		22		
	77	12	2300	4	10	40		8,32		
	78	12	1000	16	10	160		160		
	79	10	890	27	10	270				240,3
	101	10	1800	5	10	50				90
DETAL "A*" - 10 szt.										
	70	12	2300	4	10	40		92		
	71	12	2080	4	10	40		83,2		
	72	12	1000	16	10	160		160		
	73	10	890	28	10	280				249,2
	100	10	2300	5	10	50				175
DETAL "C*" - 5 szt.										
	62	12	3175	4	1	4		12,7		
	63	12	2400	4	1	4		9,6		
	64	12	1000	16	1	16		16		
	65	10	890	30	1	30				44,5
	104	10	2400	2	1	2				16,8
DETAL "D*" - 5 szt.										
	13	12	2975	4	5	20		59,5		
	14	10	890	34	5	170				156,4
	15	12	1440	8	5	40		14,4		
	16	10	1000	8	5	40				40
DETAL "B*" - 1 szt.										
	55	12	3175	2	1	2		6,4		
	56	10	890	4	1	4				14,2
	57	12	2300	2	1	2		4,6		
	58	12	1000	8	1	8		8		
	59	10	920	40	1	40				36,8
	61	10	680	20	1	20				13,6
DETAL "D*" - 11 szt.										
	21	12	1000	8	11	88		88		
	22	12	2975	4	11	44		130,9		
	23	10	920	37	11	407				374,4
	24	12	1820	2	11	22		40		
DETAL "A*" - 1 szt.										
	47	12	2975	4	1	4		11,9		
	48	12	2500	2	1	2		5		
	49	12	1000	8	1	8		8		
	50	10	920	42	1	42				38,6
DETAL "B*" - 5 szt.										
	43	12	3175	4	5	20		63,5		
	44	12	1700	2	5	10		17		
	45	10	1000	8	5	40				49
	46	10	920	38	5	190				174,8
DETAL "A*" - 9 szt.										
	39	12	2900	4	9	36		104,4		
	40	12	1000	16	9	144		144		
	41	10	890	60	9	540				480,6
	42	12	3175	2	9	36		114,3		
	103	10	2900	7	9	63				182,7
DETAL "C*" - 5 szt.										
	35	12	1900	2	5	10		19		
	36	12	1000	8	5	40		40		
	37	10	920	39	5	195				179,4
	38	12	2975	4	5	20		59,5		
DETAL "B*" - 4 szt.										
	29	12	2075	2	4	8		16,6		
	30	12	1000	8	4	32		32		
	31	10	920	40	4	160				147,2
	32	12	2975	2	4	8		23,8		
	33	8	3150	3	4	12				40,2
	34	8	3160	2	4	4				12,7
	60	8	680	20	4	80				54,4
DETAL "D*" - 4 szt.										
	25	12	2800	4	4	16		44,8		
	26	10	890	48	4	192				170,9
	27	12	1000	16	4	64		64		
	28	12	2080	4	4	16		33,3		
DETAL "C*" - 40 szt.										
	21	12	1000	8	40	320		320		
	22	12	2975	2	40	160		418		
	23	10	920	37	40	1480				1361,6
	24	12	1820	2	40	80		145,6		
DETAL "B*" - 20 szt.										
	17	12	2975	4	20	80		238		
	18	10	920	55	20	220				662,4
	19	12	1700	2	20	40		68		
	20	10	1000	8	20	160				160
DETAL "D*" - 36 szt.										
	9	12	1000	16	36	576		576		
	10	10	890	60	36	2160				1922,4
	11	12	2900	4	36	144		417,6		
	12	12	2975	4	36	144		428,4		
DETAL "B*" - 44 szt.										
	4	12	1800	4	44	176		316,8		
	5	12	1000	16	44	704		704		
	6	10	890	34	44	1436				1331,4
	7	12	2080	4	44	176		366,1		
DETAL "A*" - 44 szt.										
	1	12	2300	4	44	176		404,8		
	2	12	1000	16	44	704		704		
	3	10	890	38	44	1672				1488,1
	8	12	2080	4	44	176		366,1		
RAZEM										
					m /	7626,3		896		9175,6
					MASA EDN	0,89		0,89		0,62
					kg /	6767,4		353,4		6024
					MASA CALK.			13144,8		